



Building Communities.
Improving Lives.

Village of Posen

Lead Service Line Replacement Program



Presented By:

**HR Green, Inc. &
Village of Posen**

November 15th, 2023



Today We Will Answer the Following Questions:

What is the purpose of this project?

What are water service lines?

What are the typical water service line materials?

Why are lead service lines a public health concern?

How do I know if my house or building has a lead service line?

How do I submit the lead service line questionnaire?

What are the initial steps for the lead service line replacement program?

How do I reduce my exposure to lead?



Lead Service Line Replacement Program
Village of Posen, IL

What is the Purpose of this Project?

Lead Service Line Replacement and Notification Act (Public Act 102-0613)

The Village is mandated to gather the water service line materials for all properties which are supplied with Posen's drinking water.

The Village is required to develop a lead service line replacement plan



Lead Service Line Replacement Program
Village of Posen, IL

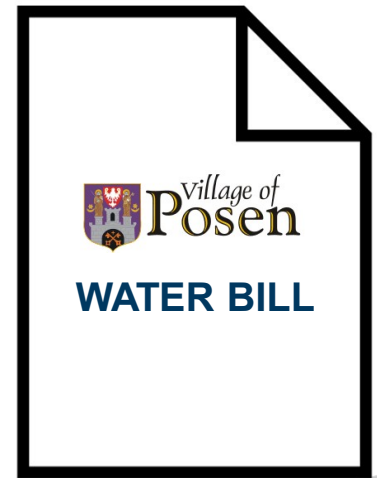
Link to Public Act 102-0613
<https://www.ilga.gov/legislation/publicacts/102/102-0613.htm>

The Village Needs Your Help!

If your house is connected to the Village of Posen water supply, you are required to fill out the Lead Service Line Questionnaire.

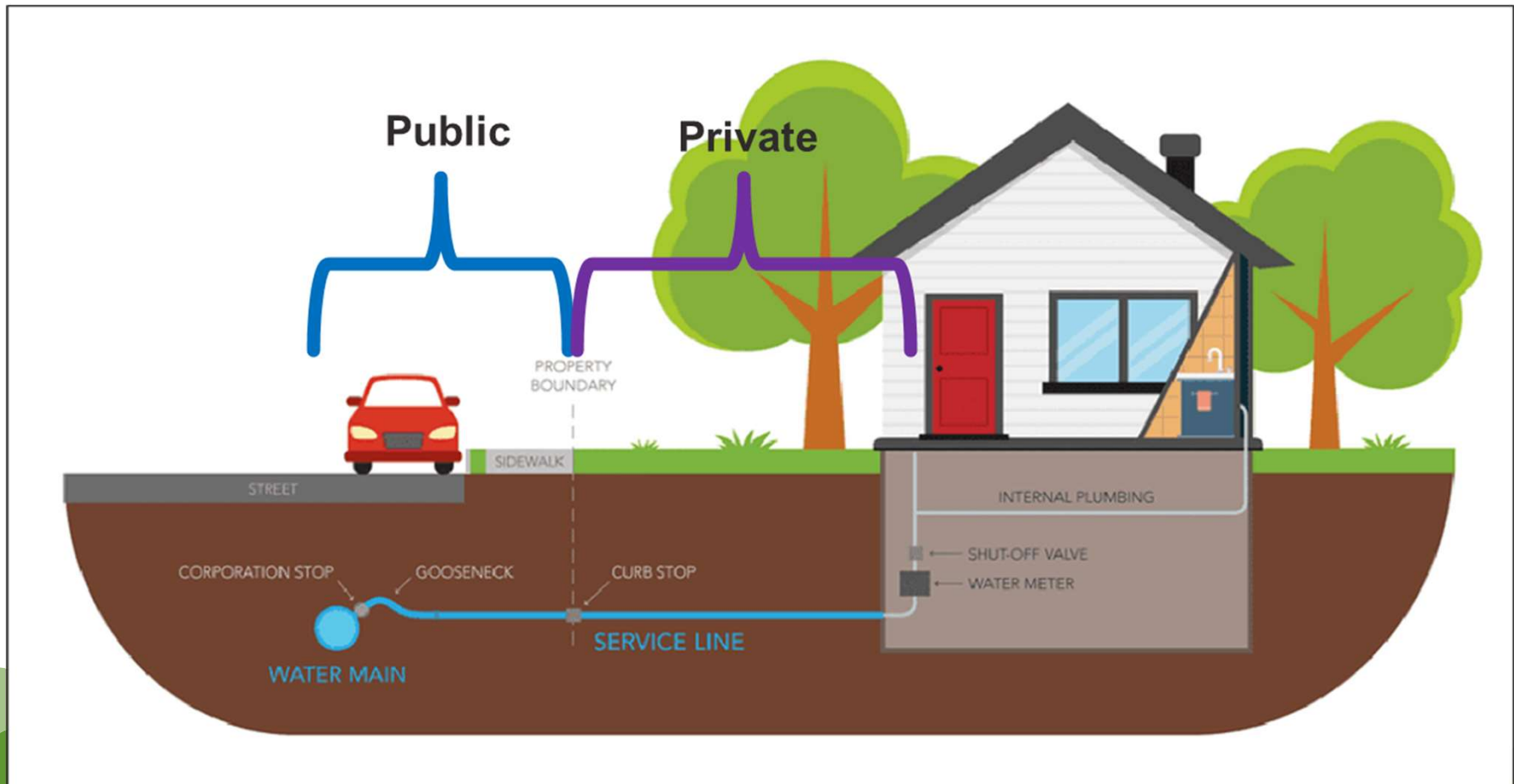
This does not apply to you if:

1. You do not receive a water bill from the Village of Posen
2. Your home, building or subdivision is on a private well



Lead Service Line Replacement Program
Village of Posen, IL

What Are Water Service Lines?



What are the Typical Water Service Line Materials?



- Congress banned lead service line pipes in 1986 to protect public health



Plastic

Why are Lead Service Lines a Public Health Concern?

- Lead can leach into the drinking water when lead pipes and plumbing fixtures with lead experience corrosion



Lead Service Line Replacement Program
Village of Posen, IL

Photo Source: <https://www.epa.gov/ground-water-and-drinking-water/basic-information-about-lead-drinking-water>

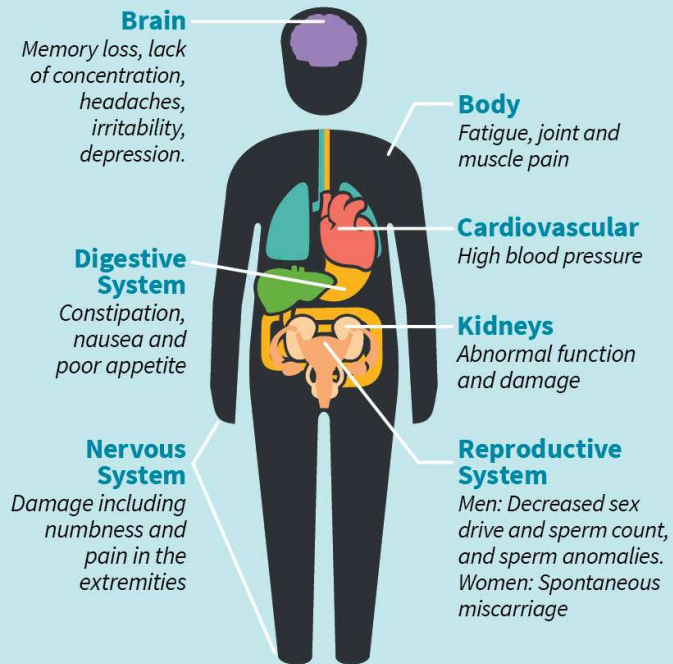
Why are Lead Service Lines a Public Health Concern?

Health Impacts of Lead

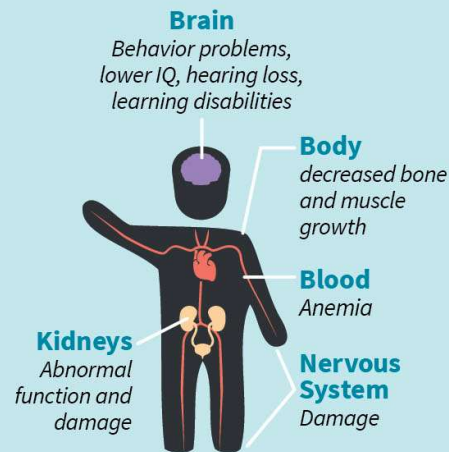


Exposure to high levels of lead can cause severe damage to the brain, blood and kidneys. Children under six are most at risk from lead poisoning. Even low levels of lead exposure have been found to permanently reduce cognitive ability and cause hyperactivity in children.

ADULTS



CHILDREN



Lead is a toxic metal that is harmful when inhaled or swallowed

How Do I Know if My House Has Lead Piping or Fixtures?

- Houses Constructed Before **1986** May Have a Lead Service Line
- Plumbing Products Sold Between **1986 and 2014** were still allowed to contain up to **8% Lead**

Village of Posen's Pipe Identification Brochure



How Do I Know If My House Has a Lead Service Line?
Please Follow These Steps and Submit Your Results to the Village

Materials Needed for Testing: Strong Magnet, a Coin, and Flathead Screwdriver

1. Find the water service line entering the building. If you have a basement, the water service line will typically enter the building through the basement floor or the basement side wall. If you don't have a basement, the service line should enter the building through the floor on the main level. You will see a shut-off valve and water meter installed on this pipe. The testing location on the pipe will be between the entry point into the building and the shut-off valve, as shown in Figure 1.
2. **Scratch Test:** Scratch the outer surface of the pipe with a coin or flathead screwdriver. Be very careful not to puncture a hole in the pipe and do not use sharp objects for this test.
3. **Magnet Test:** Place a magnet on the pipe to check if it sticks to the pipe.
4. **Tapping Test:** Tap the pipe with a coin and listen to the sound it makes.
5. Compare the results of your test with the guidelines shown below. Submit your results here:

Test Area for Lead Plumbing

Material Identification Guidelines:

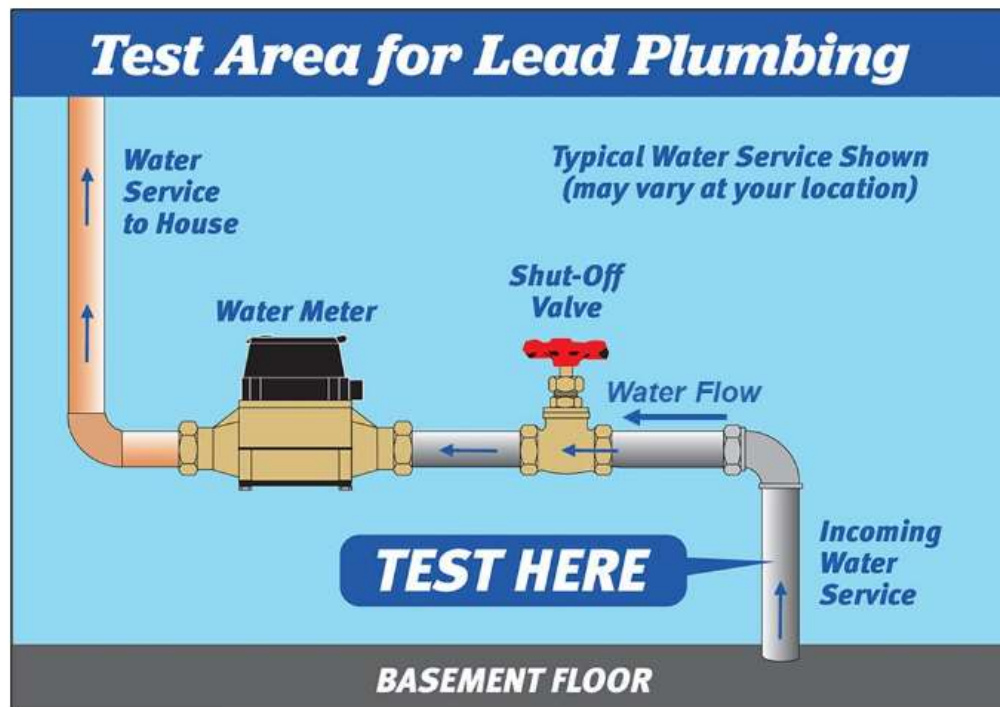
Lead	Copper	Galvanized Steel
Your Service Line is Lead if: Scratch Test: The scratched area is shiny and silver. Magnet Test: The magnet does not stick. Tapping Test: You hear a dull noise while tapping the coin.	Your Service Line is Copper if: Scratch Test: The scratched area is copper in color like a penny. Magnet Test: The magnet does not stick. Tapping Test: You hear a metallic ringing noise while tapping the coin.	Your Service Line is Galvanized Steel if: Scratch Test: The scratched area remains a dull gray. Magnet Test: The magnet sticks. Tapping Test: You hear a metallic ringing noise while tapping the coin.

HRGreen® | Building Communities. Improving Lives.



Lead Service Line Replacement Program
Village of Posen, IL

How Do I Know if My House Has a Lead Service Line?



1. Find the water service line entering the building (basement or ground level through floor or wall)
2. Scratch Test (lightly scratch pipe)
3. Magnet Test (place magnet on pipe)
4. Tapping Test (tap pipe with a coin)
5. Submit Results to Questionnaire



QR Code to Questionnaire



Lead Service Line Replacement Program
Village of Posen, IL

How Do I Know if My House Has a Lead Service Line?

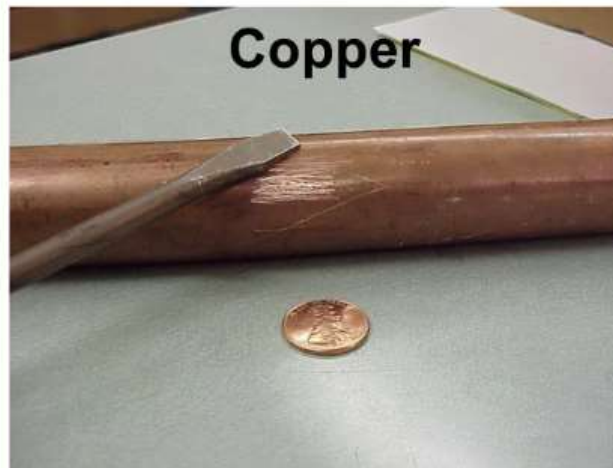


Your Service Line is **LEAD** if:

Scratch Test: The scratched area is shiny and silver.

Magnet Test: The magnet does not stick.

Tapping Test: You hear a dull noise while tapping the coin.



Your Service Line is **Copper** if:

Scratch Test: The scratched area is copper in color like a penny.

Magnet Test: The magnet does not stick.

Tapping Test: You hear a metallic ringing noise while tapping the coin.



Your Service Line is **Galvanized Steel** if:

Scratch Test: The scratched area remains a dull gray.

Magnet Test: The magnet sticks.

Tapping Test: You hear a metallic ringing noise while tapping the coin.

How Do I Submit the Questionnaire?



QR Code to Questionnaire



English-US Reset

Village of Posen: Lead Service Line Questionnaire

According to the State of Illinois' Lead Service Line Notification Act (<https://www.ilga.gov/legislation/publicacts/102/102-0613.htm>), all public water supplies are mandated to create a comprehensive water service line material inventory for all properties supplied with water in the community. The Village of Posen currently does not have information on the material of the water service line in your house and needs your help collecting this information. Please fill out the questionnaire below. If you have any questions, please contact Phyllis Villagomez, Public Administrative Assistant at (708) 293-2620 or pvillagomez@villageofposen.org.

Para ver esta encuesta en español, haga clic en el ícono mundial en la parte superior del navegador.

English-US

English-USEspañol-México

Village of Posen: Lead Service Line Questionnaire

Resident Information

First Name*

Last Name*

Questionnaire Walk-through



QR Code to Questionnaire



Phone Number*

Email*

Property Address*

Please type in your address and select from the list

Account Number

Please enter the account number found on your water bill.

Type of Occupancy*

☐

Owner

☐

Renter / Tenant

Questionnaire Walk-through



QR Code to Questionnaire



Pipe Information ▼

Identify Water Service Line Material

Use the link below to help determine the material of your water service line.

[Identifying Service Line Material](#)

Water Service Line Material*

Based on the appearance, testing, or existing records, please select the appropriate material of your water service line.

-Please select-

Lead

Copper

Galvanized Steel

Plastic

I don't know

Other

your home was built or specify the exact year by

Questionnaire Walk-through



QR Code to Questionnaire

Year Home Built*

Please select the option that best fits the year your home was built or specify the exact year by selecting the last bullet.

☐ Before 1950

☐ 1950-1986

☐ 1986-2014

☐ After 2014

☒ If known, please enter year here



Lead Service Line Replacement Program
Village of Posen, IL

Questionnaire Walk-through



QR Code to Questionnaire

Water Service Line Install Date

Please provide the install date of your water service line. If you do not know the install date, please provide the year the home or building was built.

Source of Information*

How did you determine the material of your water service line?

-Please select-

Scratch, Magnet, and Tapping Test

Plumbing Records

Lead Test Kit

Other



Lead Service Line Replacement Program
Village of Posen, IL

Questionnaire Walk-through

Add a Photo*

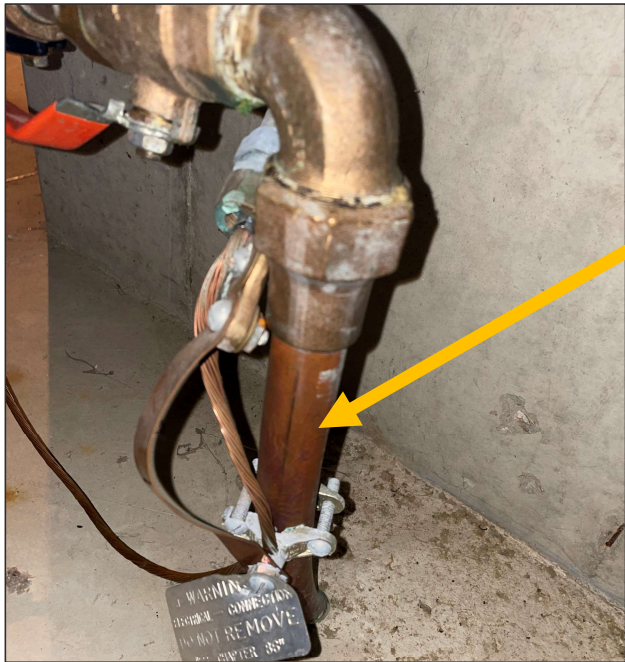
Please provide a photo of your water service line for Village staff to review.

1 Drop image here or select image (number of files allowed: 1 - 4)



Submit

Photo Examples



What are the Initial Steps for the Village's Lead Service Line Replacement Program?

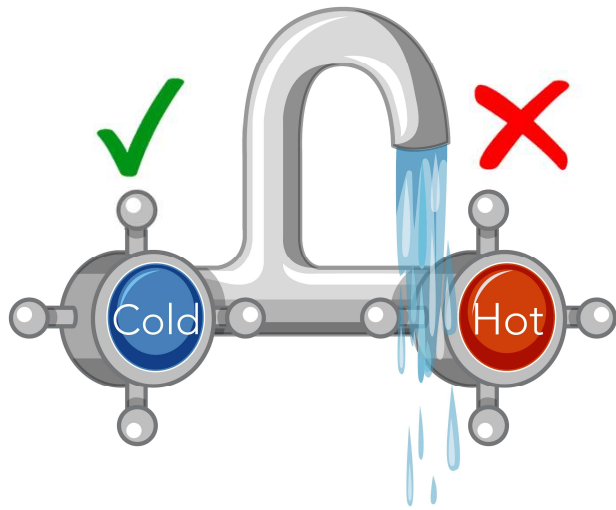
- **Step 1:** Please identify the material of your water service line or contact a licensed plumber to identify the material for you
- **Step 2:** Fill out and submit the Posen Lead Service Line Questionnaire
- **Step 3:** Village will be compiling the lead service line inventory, investigating funding, and developing a plan for lead service line replacement



Lead Service Line Replacement Program
Village of Posen, IL

How do I reduce my exposure to lead?

Always use water from the cold water tap for drinking, cooking, and baby formula.



Remove and clean your faucet aerator regularly.



Use an alternative water source for drinking and cooking



Lead Service Line Replacement Program
Village of Posen, IL

<https://static.vecteezy.com/system/resources/previews/001/436/789/original/water-tap-hot-and-cold-cartoon-style-isolated-free-vector.jpg>
<https://www.thespruce.com/removing-a-faucet-aerator-2718836>

How do I reduce my exposure to lead?

Run your water to flush out the lead before drinking



Use a water filter certified to remove lead

NSF/ANSI Standard 53



Replace your lead service line and pre-2014 plumbing fixtures



Questions



Thank You!



Lead Service Line Replacement Program
Village of Posen, IL